



65

Edition

Letter

WELCOME TO THE 20s!

I hope you enjoyed celebrating the Holiday season and New Year. We are excited to bring it in with new styles for you. I am thrilled with the colours and styles that have been designed for Edition 65, as you look through the collection I am sure you will love them too.

Within Edition 65 we have celebrated the start of a new era with big bright cheerful colours as well as keeping some of the classic favourites. I personally love the Genuine Leather style, Georgia in Pink, a very feminine handbag, I am certain it will be amongst many designs to fly out of the warehouse. 2020 is my 9th year at Vera May and over this time I have been enjoying working along side you to get your stock out so your customers experience the luxury of Vera May.

Thank you for supporting us year after year, and to all our new customers I am very excited to be able to assist you with anything you need for your account.

If you need to get in contact please feel free to call us and provide feedback, ask questions and tell us what you love. All of us in the Office are here to help you and look forward to a successful start to the new decade with you.

Here's to an exciting start to 2020

Cherry Rao

Accounts

Contents

04

GENUINE LEATHER

48

COWHIDE SADDLE &
STYLE DESIGNS

64

LADIES WALLETS

76

MENS WALLETS

82

FASHION

122

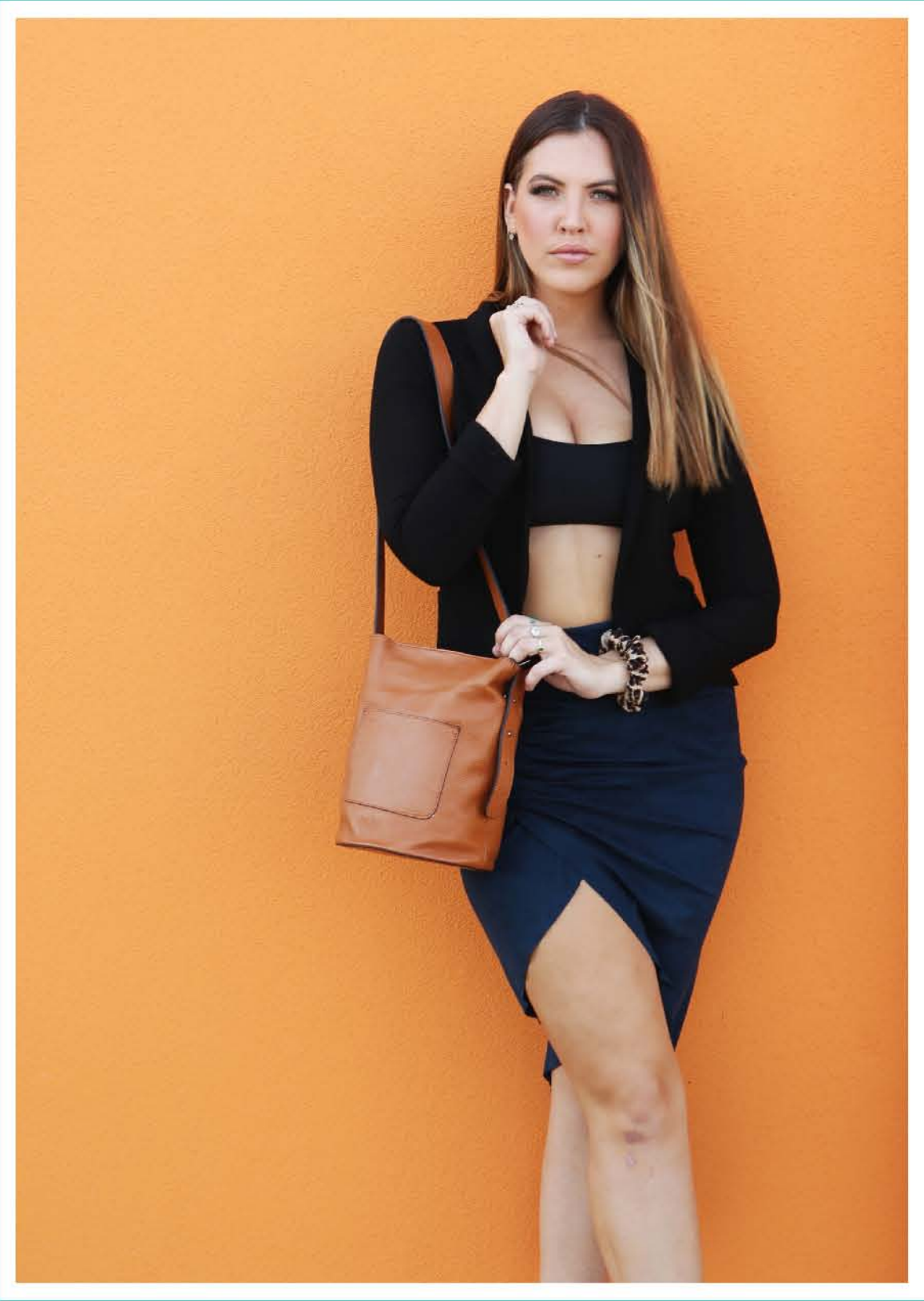
TRAVEL

*Genuine Leather - G. Leather

*Vegan Leather - V. Leather

*Patent Faux Leather - P.F. Leather

Genuine Leather



Georgia
G. Leather

30 x 21
x 11cm

trending
NOW



black



navy



pink

Robyn
G. Leather

27 x 22
x 10cm



black



beige



grey



Atara
G. Leather

32 x 25
x 7cm



black



stone



midnight

Serenity
G. Leather

24 x 23
x 11cm



pink



white



lime



Felicity
G. Leather

29 x 29
x 12cm



snake



flower

Anika
G. Leather

25 x 17
x 10cm



stone



beige



lime



Phoebe
G. Leather

38 x 20
x 18cm



black



red

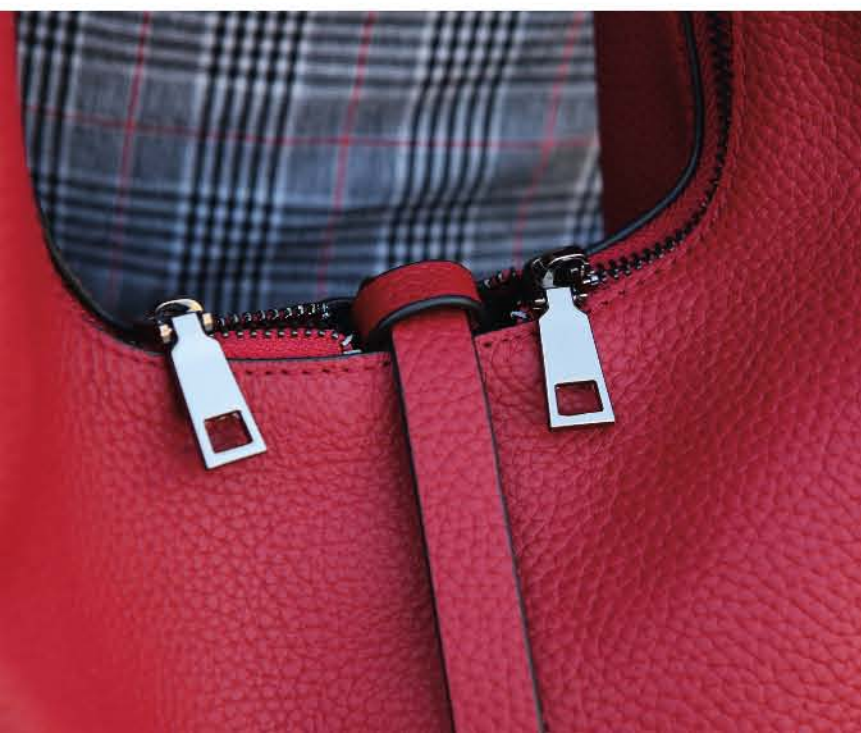


stone



Annie
G. Leather

38 x 56
x 12cm



black



stone



stone



Jayne
G. Leather

19 x 14
x 8cm



black



tan



natural



Terrie
G. Leather

35.5 x 23
x 13cm



black



tan



sage



Mckenzie
G. Leather

28 x 23
x 13cm



navy



grey

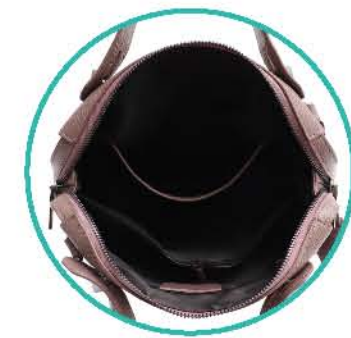


red



Danika
G. Leather

27 x 21
x 12cm



black



lilac



teal



Agim
G. Leather

32 x 25
x 12cm



black



grey



blue





Anova
G. Leather

26 x 27
x 20cm



green



tan



pink



Gozen
G. Leather

16 x 19.5
x 16cm



black



stone



sage



Karmel
G. Leather

18 x 14
x 7cm



blue



black



beige



pink



Candace
G. Leather

26 x 17
x 9cm



black



red



teal



stone



VM
loves



Bernie
G. Leather

17.5 x 11.5
x 4.5cm



black



tan



grey



green